

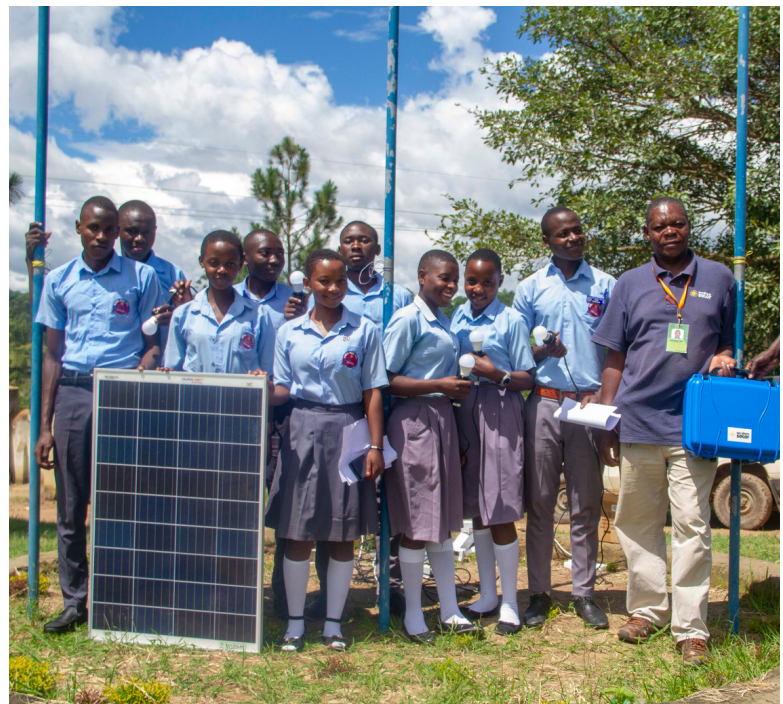


# Rwamwanja, Uganda

- 24 Solar Suitcases Installed
- More than 12,700 Students and Teachers Benefiting
- 24 Classrooms Electrified

Thank you for building a Solar Suitcase and helping to light education in Uganda!

The Solar Suitcase you built was installed with others at schools at the Rwamwanja Refugee Settlement, Uganda. With the addition of the Solar Suitcases to light the classrooms and offices, the students will have extended times to study and prepare for state examinations. The teachers will be able to prep for lessons for an extended time and charge their mobile devices without having to travel long distances. Many of the schools will see increased attendance and increased security. They will also use the Solar Suitcases to learn about solar energy.



# RWAMWANJA REFUGEE SETTLEMENT, UGANDA



The settlement was originally established in 1964 to host Rwandan refugees but closed in 1995 when many of them repatriated. It was reopened in 2012 to accommodate refugees fleeing civil unrest in the Democratic Republic of the Congo. The settlement contains primary and secondary schools, shops, beauty salons, hotels and one of the first food forests in a refugee settlement. The food forest will provide employment for residents, a reliable food source and help to decrease soil degradation.

## Basic Facts

- Location: Western Kamwenge District
- Number of residents: approx. 73,000
- Population: The majority are Congolese nationals
- Demographics: 82% of the refugees in Rwamwanja are women and children.



# THE INSTALLATION TEAM



## We Share Solar Kabale Installation Team

The We Share Solar Kabale installation team has been installing Solar Suitcases in Uganda since 2013, the very beginnings of the Solar Suitcase programs. They partner with Kabale University, Alight, Brick by Brick and community members to ensure quality installations that bring solar energy to refugee settlements and rural schools in Uganda.

The team partners with Alight, an NGO that works closely with the communities and other organizations operating within the settlement, coordinating services to meet the needs of the refugee population. Additionally, refugees were trained as apprentices to assist in the installations, maintenance and care of the Solar Suitcases.



# THE JOURNEY OF THE SOLAR SUITCASE

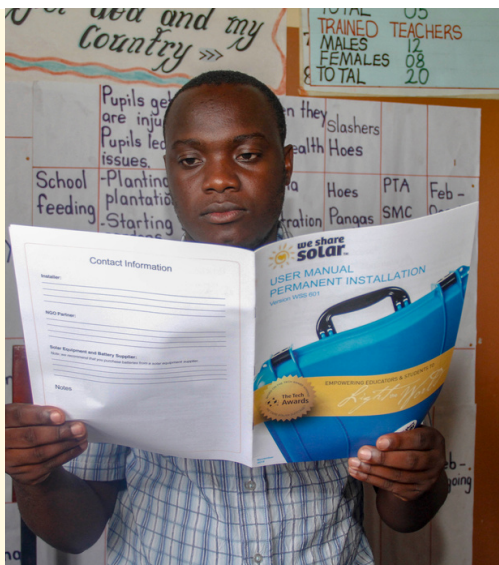


## SOLAR SUITCASES ARRIVE

The Solar Suitcase equipment is delivered to the pre-selected school sites and community centers.

## INSTALLATION

Installers safely secure the solar panels to the roofs. They fix the Solar Suitcases and lighting expansion systems on the walls.



## END USER TRAINING

The recipient students and teachers are trained in the benefits of solar energy, as well as the use and maintenance of the Solar Suitcase equipment.

# The Recipients



## School Sites for Installation

Most of the schools had no or limited access to electricity, which impacted student learning and the times the students could study at the schools.



## List of Schools

- Bwizi Seed Secondary School
- Kikurura Primary School
- Kyempango Primary School
- Mahani Primary School
- Mahani Reception Center
- Mahega Primary School
- St. Peter Claver Secondary School



# Photo Gallery



# Photo Gallery

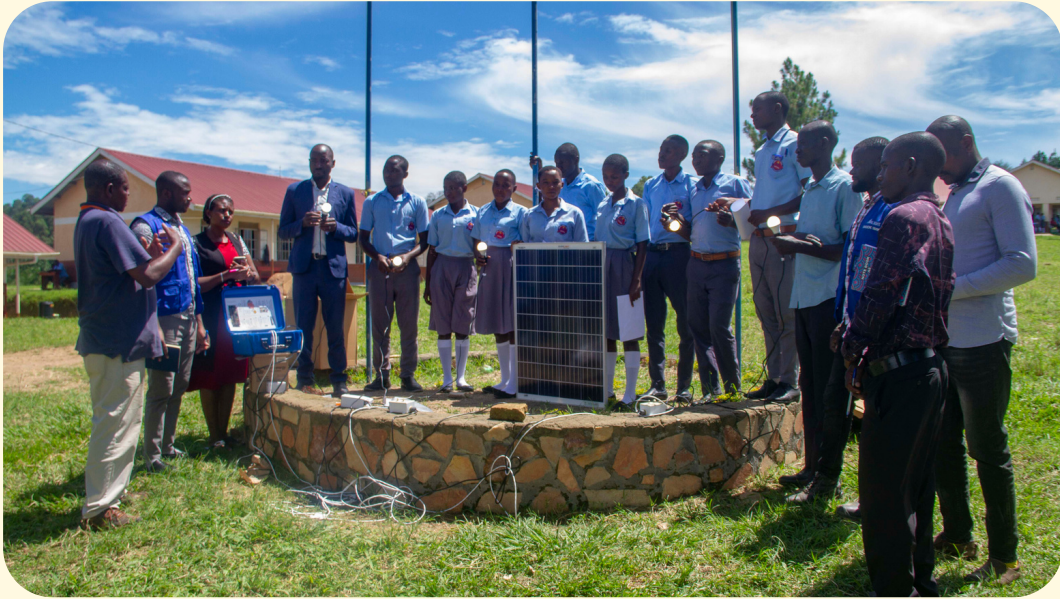


# Photo Gallery





# Photo Gallery



# Photo Gallery



# Video Gallery

Please click the links below to watch videos taken at the recipient schools.

[Refugee Students Playing](#)

[Solar Suitcase Demonstration](#)

