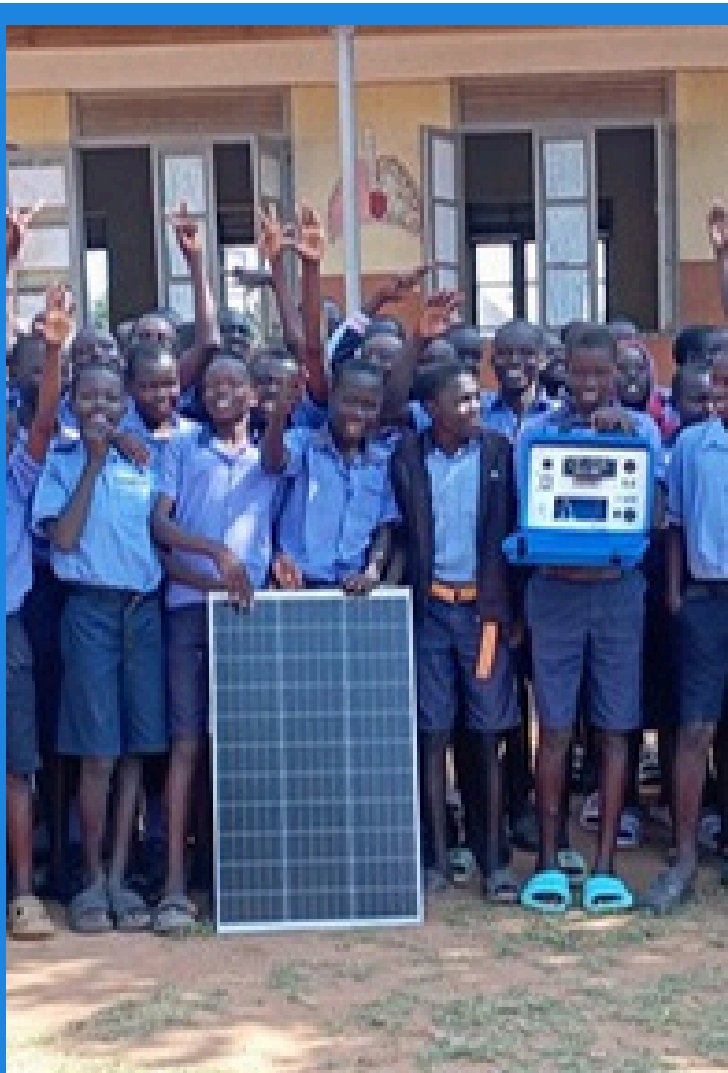


# Bidi Bidi Refugee Settlement, Uganda

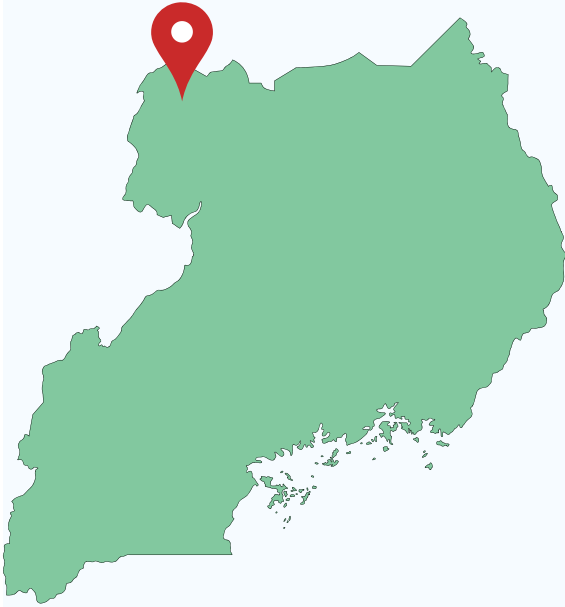
- 33 Solar Suitcases Installed
- More than 37,800 Students and Teachers Benefiting
- Over 75 Classrooms Electrified

Thank you for building a Solar Suitcase and illuminating educational opportunities in Uganda!



The Solar Suitcases built by your students have been successfully deployed alongside others at schools in Yumbe, Uganda. By incorporating these Solar Suitcases to illuminate classrooms and offices, students will have increased study hours, aiding in their preparation for state examinations. Teachers will benefit from extended preparation time for lessons and convenient charging of their mobile devices, eliminating the need for long commutes. Attendance rates will increase and the Solar Suitcases will serve as educational tools, allowing students to gain insight into solar energy utilization.

# BIDI BIDI REFUGEE SETTLEMENT, UGANDA



Bidi Bidi Refugee Settlement is the largest in Uganda and second largest in the world. In Bidi Bidi, out of 42 schools only 10% have access to solar light. Over 73,000 learners in primary schools and over 7,000 in secondary schools will benefit from the light and power provided by the Solar Suitcases. The majority of refugees in Bidi Bidi are displaced due to conflict or climate change. There are generally less services available compared to other settlements due to size of the population and also the geographic location.

## Basic Facts

- Location: Yumbe District of northwestern Uganda
- Number of residents: approx. 270,000
- Population: The majority are South Sudanese asylum seekers
- Geography: Consists of five zones and includes farms, schools, community centers and health care centers



[Click here to watch a video about We share Solar in Bidi Bidi](#)



# THE INSTALLATION TEAM



## We Share Solar Kabale Installation Team

The We Share Solar Kabale installation team has been installing Solar Suitcases in Uganda since 2013, the very beginnings of the Solar Suitcase programs. They partner with Kabale University, Alight, Brick by Brick and community members to ensure quality installations that bring solar energy to refugee settlements and rural schools in Uganda.

The team partners with Alight, an NGO that works closely with the communities and other organizations operating within the settlement, coordinating services to meet the needs of the refugee population. Additionally, refugees were trained as apprentices to assist in the installations, maintenance and care of the Solar Suitcases.





# BRINGING LIGHT TO EDUCATION

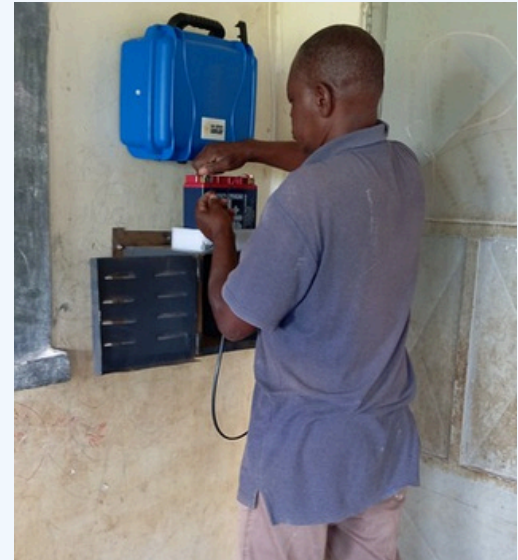
## SOLAR SUITCASES ARE DELIVERED

The Solar Suitcase equipment is delivered to the pre-selected school sites and community centers.



## INSTALLATION

WSS installers safely secure the solar panels to the roofs. They fix the Solar Suitcases and lighting expansion systems on the walls.



## END USER TRAINING

The recipient students and teachers are trained in the benefits of solar energy, as well as the use and maintenance of the Solar Suitcase equipment.





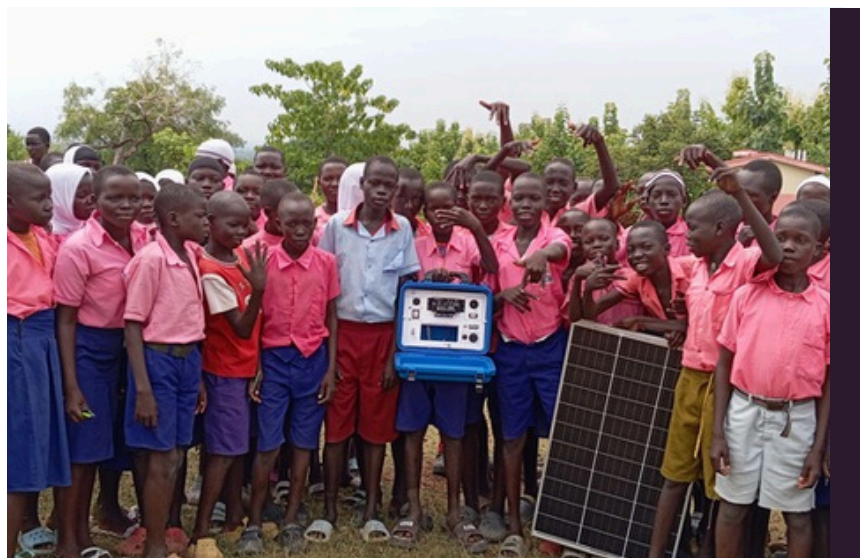
## School Sites for Installation

Most of the schools had no or limited access to electricity, which impacted student learning and the times the students could study at the schools.

### List of Schools

- Abiriamajo Primary School
- Ambia Primary School
- Ariju Primary School
- Highland Primary School
- Highland Secondary School
- Kado Secondary School
- Knowledgeland Primary School
- Komgbe Primary School
- Koro Primary School
- Kumia Primary School
- Luzira Bright View Primary School
- Nipata Secondary School
- Nipata Valley Primary School
- Obero West Primary School
- Ofonze Primary School

## Installation Sites





## List of Schools (cont.)

- Okubani Primary School
- Oluba Primary School
- Para Primary School
- Rockland Primary School
- Singa Islamic Primary School
- Tuajiji Hope Primary School
- Yoyo Primary School
- Yoyo Secondary School

# Installation Sites





# Photo Gallery





# Photo Gallery



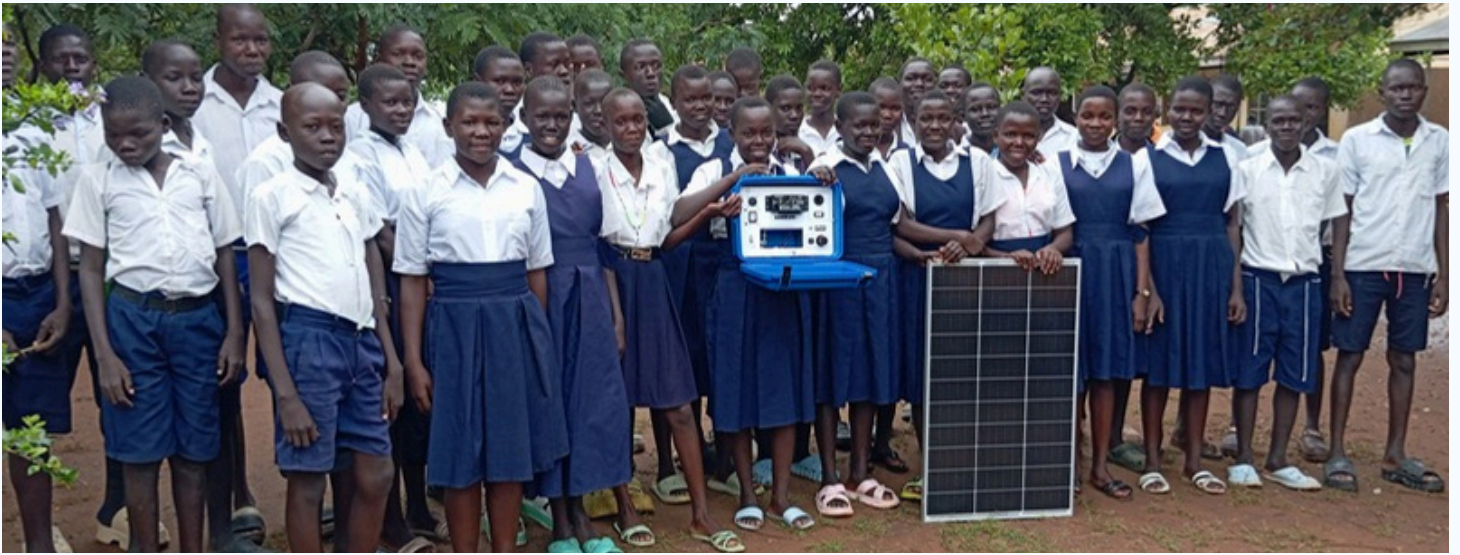


# Photo Gallery



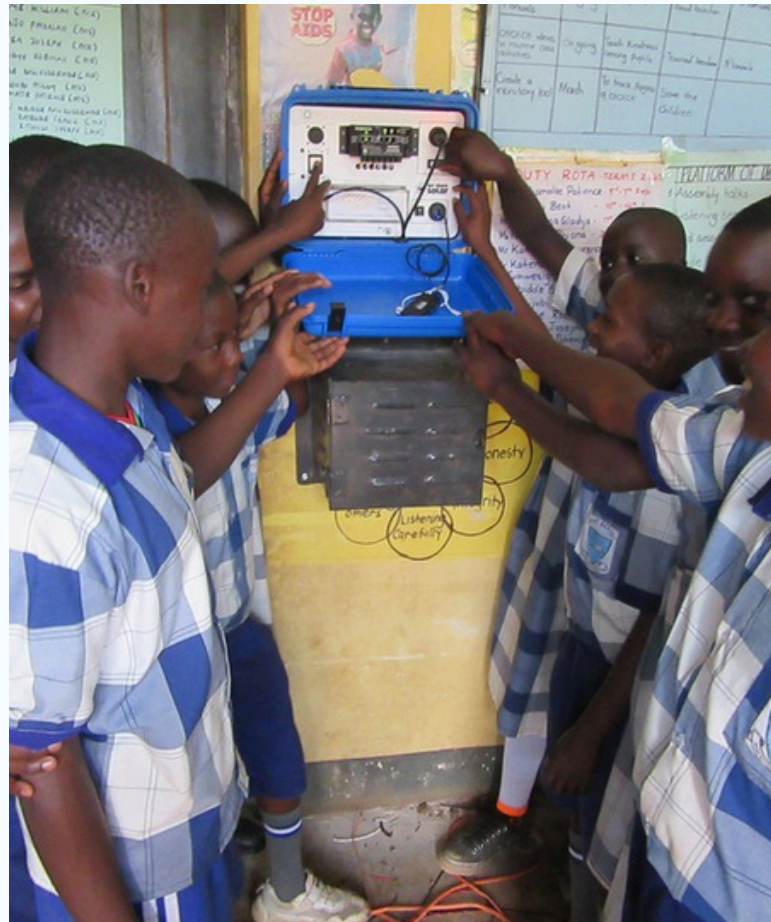
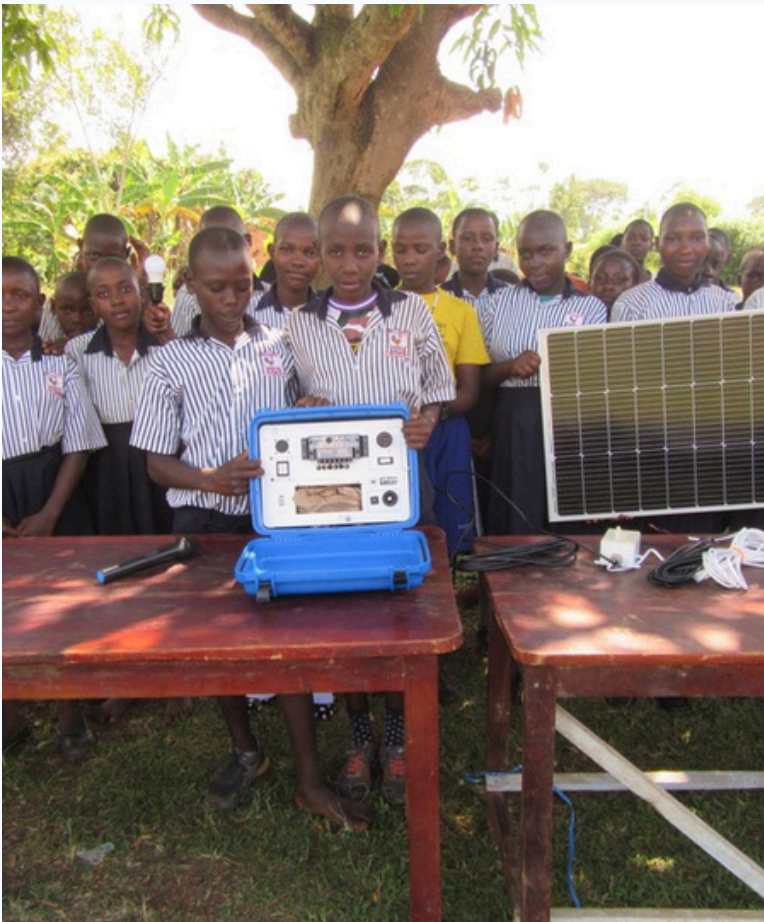


# Photo Gallery





# Photo Gallery





# Photo Gallery

